

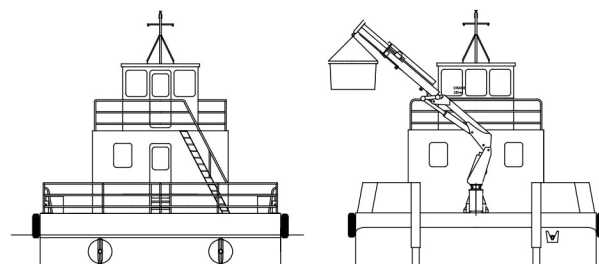
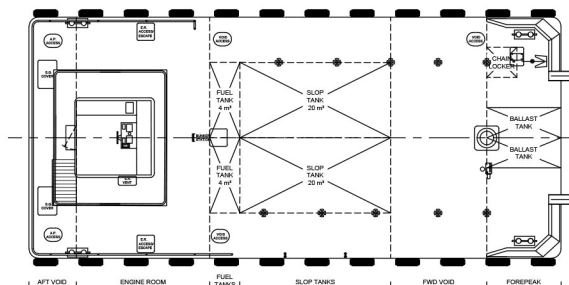
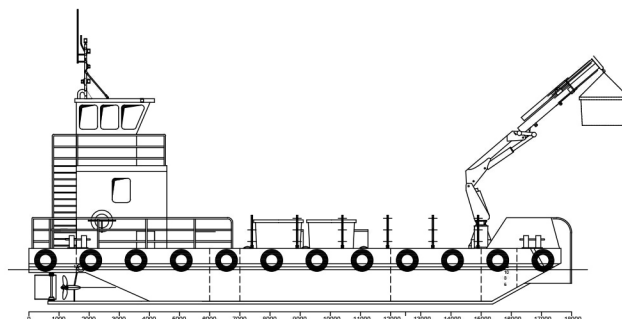
# 18m - MULTI-PURPOSE VESSEL

MULTI-CATEGORY WORKBOAT



## VESSEL PARTICULARS

<b>Vessel Type</b>	Mainstay Marine Multi-Category Workboat
<b>Classification</b>	UK MCA Small Commercial Vessel code of practice area category 3, up to 20 miles from a safe haven
<b>Hull</b>	Heavy duty steel all welded construction
<b>Dimensions</b>	Length - 18m, Beam - 8m, Draught - 1.25m
<b>Main Engines</b>	2 x Doosan LO86 TIH marine diesel engines, total 570 hp at 2100rpm, 110 A alternators, D-I Reversing Gearbox 3:1 nominal reduction, fixed pitch propellers and water lubricated stern gear
<b>Bollard pull</b>	4 tonnes
<b>Speed</b>	8 knots
<b>Tank Capacities</b>	Fuel 8m <sup>3</sup> (2 x 4m <sup>3</sup> ) - Fresh Water 1m <sup>3</sup> Waste cargo 2 x 20m <sup>3</sup> (heated) Hydraulic Oil 250 ltr
<b>Navigation Aids</b>	Compass, radar, echosounder, VHF/DSC radio, GPS, electronic chart display, handheld VHF radio, searchlight.
<b>Equipment</b>	Iron Fist continuous rotation deck crane capable of 6,000kg at 6m to 2,050kg at 12.5m; hydraulic anchor winch; 1 x 18KW 50Hz generator set; 2 push bows; mooring equipment; 12 elephant's foot deck securing points
<b>Accommodation</b>	Fitted with heated galley and mess area. Heads and shower with wash basin



TIME CRITICAL PRECISION

