

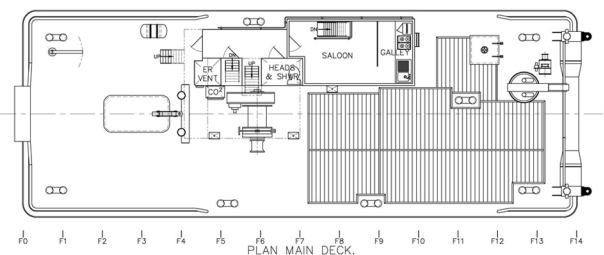
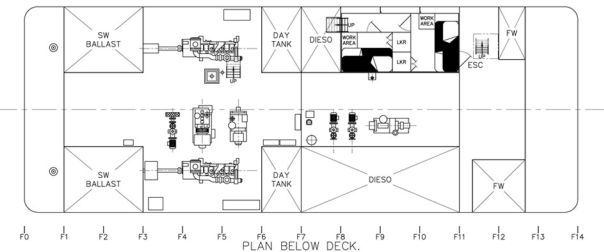
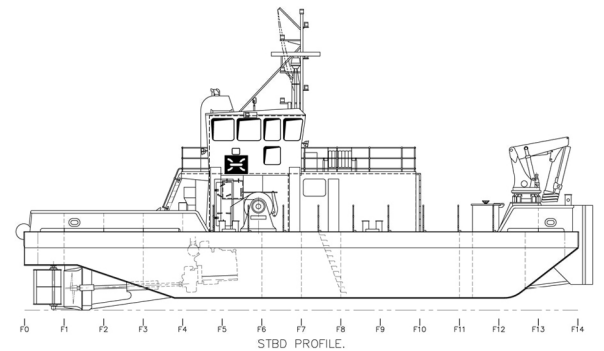
21.5m - MULTI-PURPOSE VESSEL

TWIN SCREW SHALLOW DRAFT COASTAL TUG/WORKBOAT



VESSEL PARTICULARS

Year Built	2014
Classification	Bureau Veritas 1 3/3 (E) Pontoon coastal waters. UK MCA Workboat code of practice category 2, up to 60miles from safe haven
Hull	Heavy duty steel all welded construction
Dimensions	Length - 21.5m, Beam - 7.8m, Draught - 2.0m
Main Engines	2 x Cummins K19M engines, total 940bhp at 1800rpm, driving through twin disc MG516 gearboxes, fitted with keel cooling and fixed nozzles
Bollard pull	14 tonnes
Speed	9 knots
Tank Capacities	Fuel 64m ³ - Fresh Water 39m ³
Navigation Aids	Compass, autopilot, 2 x daylight viewing radars, echosounder, 2 x VHF radios, Navtex, GPS, electronic chart display, telephone, searchlights
Equipment	65t/m hydraulic knuckleboom crane, capacities 13,500kg at 2.5m radius, 4270 at 8.95m radius with 3000kg winch, anchor handling winch, capacities 30 tonnes pull at 8.25m per minute, 15 tonnes pull at 16.5m per minute. GM3-71 90bhp hydraulic power pack, 40kva Cummines generator set, 5kva Lister generator set, fuel and fresh water supply systems, both at 50m ³ per hour, deckwash/GS pump 25m ³ per hour, 15 tonnes towing hook, 50 tonne bow roller, push bows, windlass, towing and anchor handling equipment, flying bridge control station, 30 tonnes demountable 'A' frame, 9 metre dredging and levelling plough
Accommodation	For 4 crew. Heads & shower compartment, deck cabin with crew messing area & galley. 2 x Crew cabins, 2 berths.



TIME CRITICAL PRECISION

