

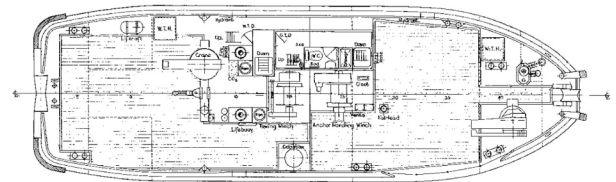
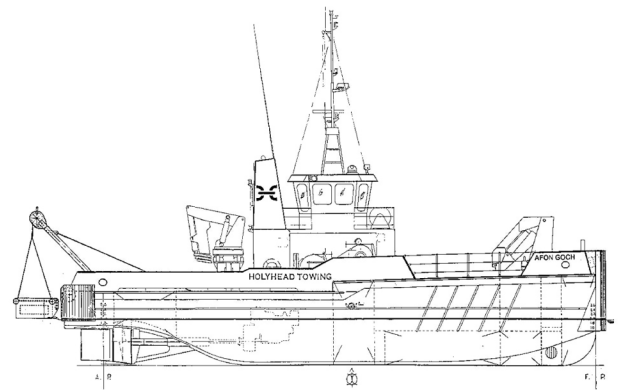
24m - MULTI-TUG VESSEL

TWIN SCREW SHALLOW DRAFT SEAGOING MULTITUG



VESSEL PARTICULARS

Year Built	1997
Classification	Bureau Veritas 1 3/3 (E) Tug Deep Sea. UK MCA Workboat code of practice category 1, up to 150 miles from safe haven
Hull	Heavy duty steel all welded construction
Dimensions	Length - 23.8m, Beam - 7.5m, Draft - 2.0m
Main Engines	2 x Caterpillar 3412DITA engines, total 1450bhp at 1800rpm, twin disc MG5202 gearboxes, fitted with box cooling and fixed Kort nozzles
Bollard pull	19 tonnes
Speed	11 knots
Tank Capacities	Fuel 51m ³ - Fresh Water 90.3m ³
Navigation Aids	Compass, autopilot, 2 x daylight viewing radars, echosounder, 2x VHF radios, SSB radio, Navtex, GPS, electronic chart display, GSM telephone, searchlights
Equipment	High lift steering gear, 120bhp bowthruster, 80t/m knuckle-boom crane capable of 15,800kg at 5m to 7,390kg at 10.2m. 34t/m knuckleboom crane capable of 8000kg at 4.1m to 3600kg at 9.3m, anchor handling winch capable of working over bow or stern, 45 tonnes pull at 8m per minute, 22.5 tonnes pull at 16m per minute, towing winch, wire capacity 270m of 36mm wire, capstan, windlass, Cummins 6BTA diesel hydraulic power pack 192bhp, 2 x Cummins 33kva generator sets, fuel supply system 50m ³ per hour, fresh water supply system 50m ³ per hour, 20 tonne towing hook, 50 tonne bow and stern rollers, 2 push bows, hardwood covered working decks, towing and anchor handling equipment, demountable 30 tonne 'A' frame, 9m dredging and levelling plough
Accommodation	Heated and fitted for up to 6 persons



TIME CRITICAL PRECISION

